

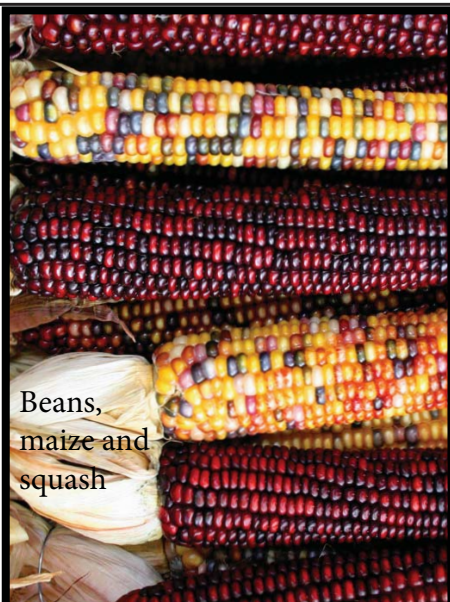
Southwest

The Southwest is a land of semi-arid and arid lands, of deserts and mountains, including flat-topped mountains called mesa. There is little rain, but it snows in the mountains.

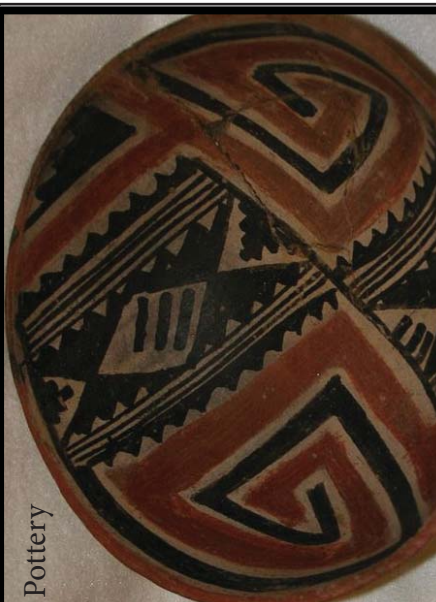
Plants include cacti and other desert plants. Game animals included Bighorn sheep, rabbit, and deer.

People of the Southwest

- Pueblo - Hopi, Zuni
- Pima and Papa
- Apache and Navajo



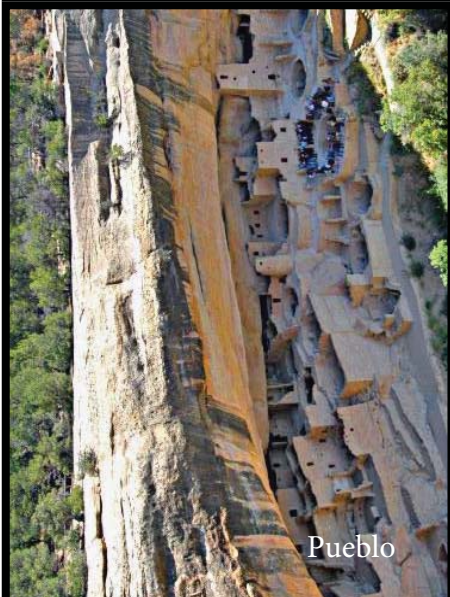
Beans, maize and squash



Pottery



Kachina dolls



Pueblo



Apache home



squash blossom hair do

Southwest

The Southwest is a land of semi-arid and arid lands, of deserts and mountains, including flat-topped mountains called mesa. There is little rain, but it snows in the mountains.

Plants include cacti and other desert plants. Game animals included Bighorn sheep, rabbit, and deer.

People of the Southwest

- Pueblo - Hopi, Zuni
- Pima and Papa
- Apache and Navajo

The Pueblo or Anasazi were many different people with similar cultures. They lived in impressive villages of multi-storey block of flats made of adobe and masonry.

The main crops were maize, corn, squash, and cotton. Unusually amongst Native Americans clothes were made of woven cotton.

The many Kachina, or spirits were very important. They were represented by dolls, and by men dressed up in masks and costumes to become the spirits. Men met together in secret societies in underground temples called kiva.

Girls ready to find a husband wore their hair in an unusual butterfly-like style.

The area is famed for its pottery.

There were also hunter gatherer cultures in the area, including the later arriving Navajo and Apache. They raided the pueblo people.

Southwest





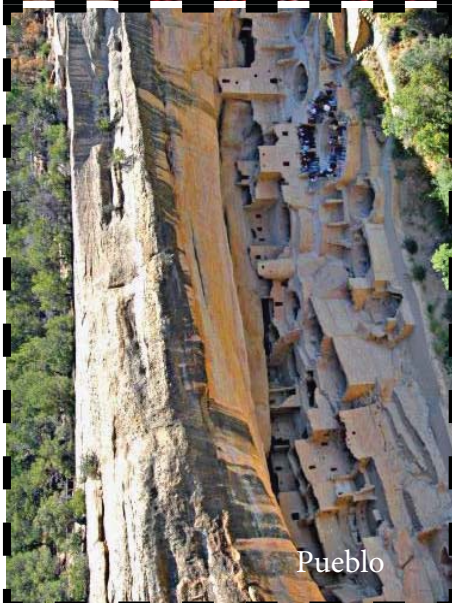
Beans,
maize and
squash



Pottery



Kachina dolls



Pueblo



Apache
home



squash blossom hair do

The images used are in the public domain.

Except:

Corncoobs edit1.jpg Asbestos / Waugsberg CC BY-SA

Mesaverde cliffpalace 20030914.752.jpg Lorax CC BY-SA

Leaving Mesa Verde National Park (3455117847).jpg Alex Proimos CC BY