

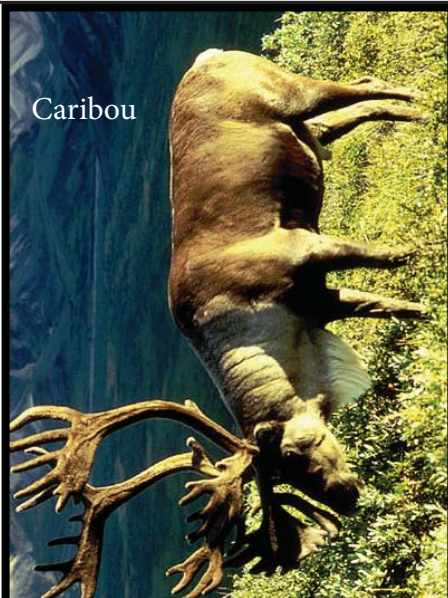
Subarctic

Long, very cold winters, and short, cool to mild summers. Dry.

Large forest of conifer and a few broadleaved trees (Taiga).

Poor, cold soils and short growing season.

- Cree
- Yellowknives
- Ojibwe



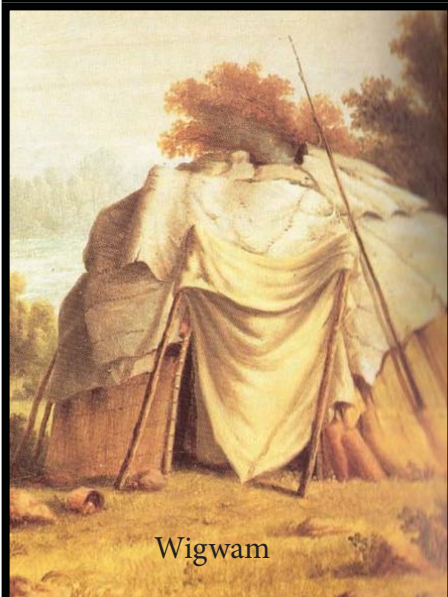
Caribou



Birch bark canoe



Birch tree



Wigwam



snowshoe



Birch bark scrolls

Subarctic

Long, very cold winters, and short, cool to mild summers. Dry.

Large forest of conifer and a few broadleaved trees (Taiga).

Poor, cold soils and short growing season.

- Cree
- Yellowknives
- Ojibwe

The people were hunted, fished and foraged for everything they needed.

Game animals included caribou, beaver and moose.

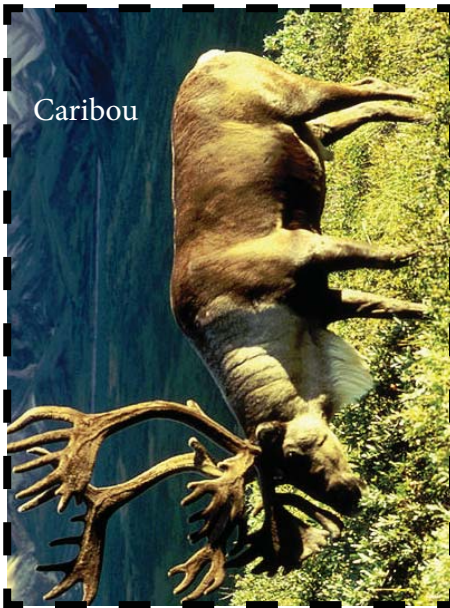
Birch trees provided a tasty sap and bark. Bark was used to make birch bark scrolls - which helped record history. It was also used in making birch bark canoes.

Small bands lived together travelling to find food, and living in skin covered wigwams.

Snowshoes allowed hunters to walk in the snow, and hunt moose in the winter when they were easy to track.

Subarctic





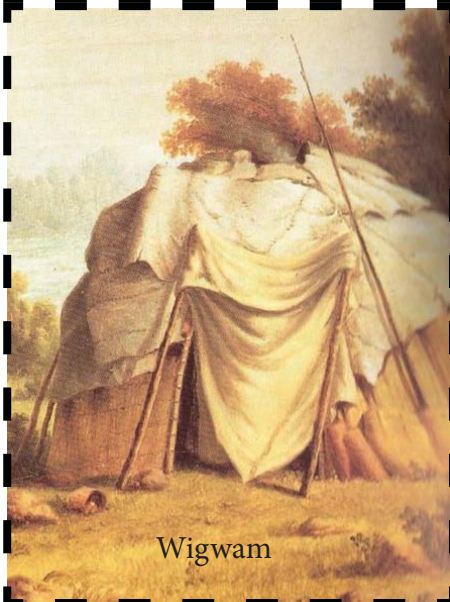
Caribou



Birch bark canoe



Birch tree



Wigwam



snowshoe



Birch bark scrolls

The images used are in the public domain.

Except:

Betula papyrifera1.jpg Kurt Stüber CC BY SA